

Intute Law Workbook

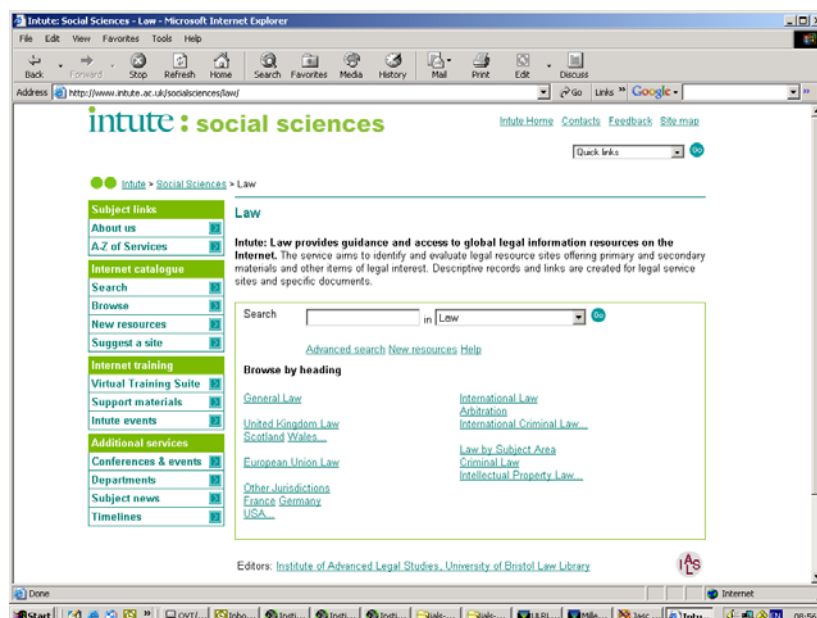
Intute is a subject-based Internet catalogue developed in the UK as a free service giving access to carefully selected web resources. Intute: Social Sciences presents materials most relevant to research and learning in business, government, parliamentary, social welfare and law. The service provides descriptive resource records and links to documents and web sites, selected, classified and reviewed by subject specialists. Intute is a composite name derived from 'Internet' and 'Tutorial' and is intended to convey the experience of guided learning and online resource discovery.

The Intute Law Workbook is designed to introduce you to the law section of Intute: Social Sciences. It contains examples and exercises to help you explore the wealth of legal materials available on the Internet, with suggestions on how to make full use of Intute: Law for teaching and learning in law.

The Workbook looks at the range of materials included in and referenced through Intute. It highlights Intute features to try for yourself and shows how Intute can help you filter the mass of Internet information, making it easier to find useful sites for a given jurisdiction or legal subject area. In Part One, each section looks at a type of material on the Web, quoting examples and demonstrating Intute functionality. Part Two discusses additional Intute features and sample uses. Exercises are set in some sections and possible answers are at the end of the book.

1. Connecting to Intute Law

Intute is easily accessed over the web from any networked computer. Minimal graphics are used to assist global delivery. Using your web browser on a networked PC, connect to Intute: Law at: <http://www.intute.ac.uk/socialsciences/law/> The Intute Law Gateway offers options for searching and browsing a catalogue of quality selected Internet resources and access to other features designed to aid study and research.



There are links to browsable subject sections and sub topics, a search box, advanced search options, new resources list, help options, buttons and links for more information about Intute and links to other facilities including the Virtual Training Suite, other training materials, Conferences and Events, departments, subject news and MyIntute services.

Intute: Law provides access to quality-checked law related resources, utilising a structured web database to present detailed site profiles, content assessments and well-maintained dynamic links to sites publishing primary materials (stating the law) and secondary materials (commenting on law) that are the substance of legal research.

2. Nature of the Internet and why Intute is useful

The Internet is an increasingly valuable source of legal information and materials. Global expansion in Web publication and public service publication offers a wide range of legal materials and law-related resources. As the law and legal materials are frequently changing, the Web provides an ideal means of handling that change, allowing daily or hourly updates that would have been previously unimaginable - delivering more material, more currently and quickly.

Many government sites around the world provide free access to significant collections of substantive primary materials (including current and proposed legislation as well as constitutions and case law). University sites, law schools, law firms and legal publishers are providing commentary, running electronic journals and producing many content-rich law sites. The technology has offered interactive possibilities and is developing new materials - derived from email discussion lists, notice boards and blogs or previously unpublished papers - which might be considered to be tertiary law sources. As a result there is more legal information than ever on the Internet, waiting to be found. There are a number of points to bear in mind when finding and using such resources (particularly the wealth of free materials on the Web) to support legal study and research:

Time element

Give yourself thinking time and an opportunity for preparation before going on the Web. Network speed may effect the time of day when you go on the Internet and may be a factor in how much time you can spend online. Set yourself a Web research slot and consider alternatives. The Internet is still a supplement rather than substitute for traditional legal materials held in law library collections - particularly for historical materials (pre 1990) although more retrospective materials appear all the time.

Hidden information

Despite the continuing development of Internet-wide search engines, a high percentage of the information available remains hidden, not indexed and not evaluated for quality. Complex site structures, dynamically generated pages, multimedia content and login protected pages are not reached and never evaluated by the search robots.

Quality

It is very important that serious users have a means of accessing the quality of the information offered and the credibility of its source - so we are able to spend time finding and using not just seeking and searching. Remember to record the urls, web addresses and citations for sources you plan to use.

How Intute can help you

Intute takes account of these issues and can help you develop a successful approach to web-enabled research. The human factor (your skills) and the application of professional judgement are important in helping to distinguish between substantive resources and sites of limited academic value. Sites included in the Intute Internet Resource catalogue are selected by subject specialist identifying the best of the web to help give you a start.

Think about what you need to achieve. Ask yourself questions to clarify your needs and ideas. Are you searching for a specific item (need to focus in - narrow your research) ? or do you need to browse (want to collect more ideas - broaden your research) ? The search and browse facilities on Intute let you do both and will raise awareness of the type and quality of resources available.

Part One: Finding Law Resources on the Internet with Intute

3. Types of sources for legal research

Most of the varied forms of legal information can be found on the Internet and are catalogued on Intute: Law.

Primary legal sources - *legislation, law reports, treaties*

Secondary legal sources - *articles, essays, books, journals*

Finding tools - *digests, resource guides, annotated link directories and portals, library catalogues.*

Government web sites and departmental sites - *posting official documents and publications*

Organisations - *professional associations, societies, bar councils and law societies*

Companies - *legal publishers, commercial information providers, law firms*

Academic and educational sites - *Universities, law schools, Research Centres and Projects, course outlines, learning packages, pathfinders, bibliographies and research guides.*

Data - *Statistics + FAQs*

News - *legal newsletters, newspapers, current awareness services, alerting services, blogs.*

4. Intute records – evaluative descriptions of the best sources for legal research

The Intute Internet Resource Catalogue contains descriptive records and links to some of the best free sources for legal research on the Internet.

Intute : social sciences	
Intute > Social Sciences > Full record display	
Subject links About us A.Z of Services Internet catalogue Search Browse New resources Suggest a site Internet training Virtual Training Suite Support materials Intute events Additional services Conferences & events Departments Subject news Timelines	Title International Court of Justice Decisions Also known as ICJ Decisions Description Section of the official website for the International Court of Justice which sits at the Hague in the Netherlands and is the principal judicial organ of the United Nations. The site publishes the full-text of ICJ awards or decisions brought before the Court from 1946 onwards. Cases are listed in reverse chronological order, supplemented by a list of contentious cases by country. Official judgments and Advisory opinions are presented on the site with an indication of whether the text is full case overview or summary of judgments and orders. The site is maintained by the Registry of the Court, providing additional information about the work of the ICJ with links to Press Communiqués, Communiqués on pending cases, events and visits. The site is presented in both English and French language versions. A number of mirror sites are available including one hosted by the University of Glasgow School of Law. Keywords - controlled list International Court of Justice; international law; international organisations; Type Law reports URL http://www.icj-cij.org/icjwww/idecisions.htm [English] http://www.u-paris2.fr/cj/icjwww/idecisions.htm [English] http://www.lawschool.cornell.edu/library/icjwww/idecisions.htm [English] Classification International Law; Country of origin Netherlands Format html

Example: International Court of Justice Decisions <http://www.icj-cij.org/icjwww/idecisions.htm>

The Intute record for the site gives details of: the site title (which also acts as a link to the site itself), a description of the resource, a list of keywords assigned to the resource, information about country of origin, site format, languages, classification codes, and site url. The description provides an informed assessment of the resource, aiming to reveal the full

qualities of the site. The profile tells you who is providing the information and why. It indicates the coverage and content of the site with a note of geographical or temporal limits.

5. Primary Sources

Intute: Law can help you find sources of primary legal literature on the Internet.

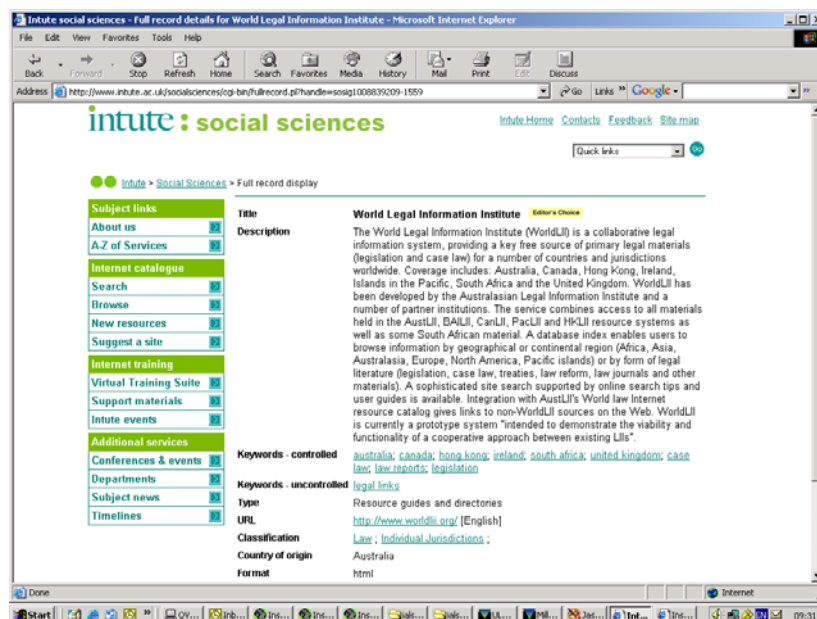
5.1 Key sites

A look at the Editor's Choice feature on Intute

Key sites of special importance are assigned editor's choice status on Intute, highlighting their value and giving them priority so they display at the top in the browse screens.

World Legal Information Institute

Editor's Choice



Collaborative services like WorldLII <http://www.worldlii.org/> aim to deliver free public service access to primary legal materials. These free services are starting to complement the leading subscription-based legal information retrieval services like Lexis-Nexis <http://www.lexis-nexis.co.uk> and Westlaw UK <http://www.westlaw.co.uk> (Your library may have paid for access to these services. Check locally for details).

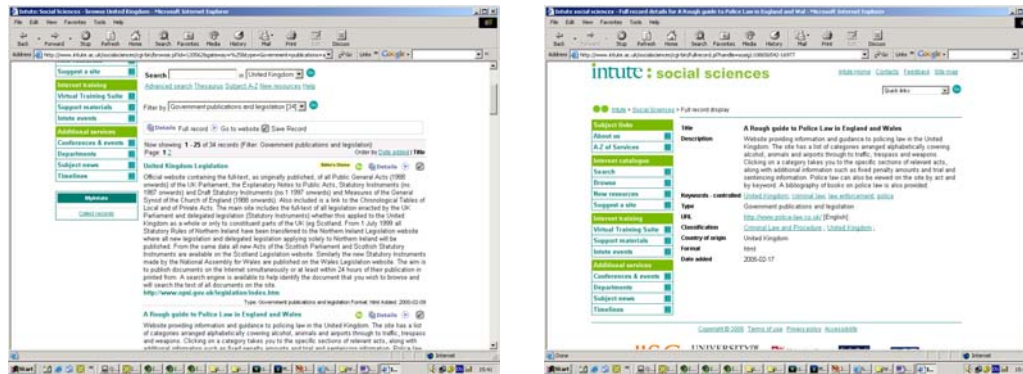
Take a look at some of the other comprehensive primary resource sites described on Intute. Use the arrow icon to the left of the title on Intute browse screens to connect directly to the site or click on the title to read the Intute site description.

Australia	AustLII	http://www.austlii.org/
European Union	Eur-lex	http://europa.eu.int/eur-lex/en/index.html
United Kingdom + Ireland	BAILII	http://www.bailii.org/
Canada	CanLII	http://www.canlii.org/
Commonwealth	CommonLII	http://www.commonlii.org/
Hong Kong	HKLII	http://www.hklii.org/
Pacific Islands	PacLII	http://www.pacii.org/
South Africa	SAFLII	http://www.saflii.org/
United States	LII Cornell	http://www.law.cornell.edu
World Collections	WorldLII	http://www.worldlii.org/

5.2 Legislation

Evaluative resource descriptions on Intute

Intute helps identify sites providing full text legislation on the Web. Look at some of the UK legislation sites listed in the Intute>>United Kingdom>>Legislation section. Other types of site may also include selected pieces of legislation. Intute site descriptions will help uncover such sources.



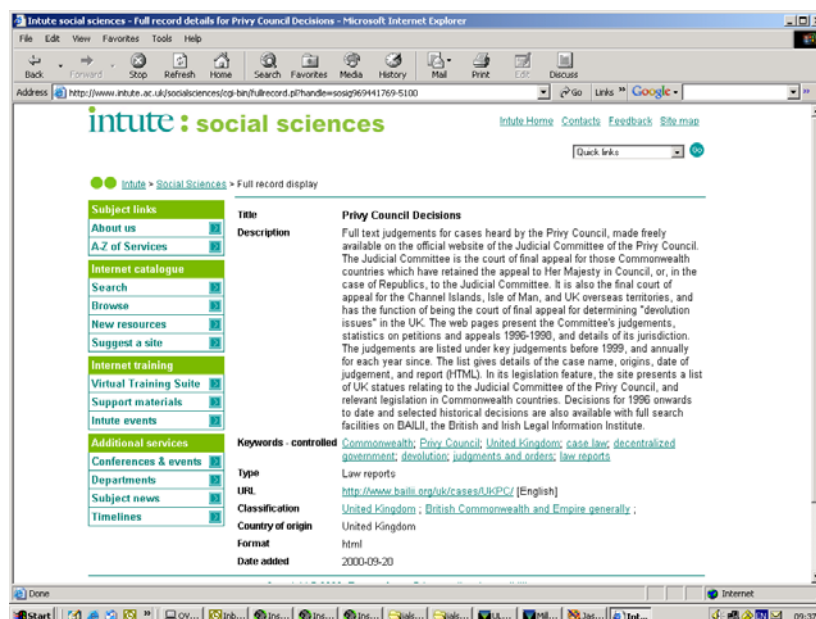
Acts of UK Parliament <http://www.legislation.hmso.gov.uk/acts.htm>

The profile will tell you about dates of coverage and note that the text of acts contained on the site are as originally passed (without amendments or repeals) or are consolidated texts current to a particular date or that some amending material is also available onsite.

5.3 Law Reports

Comparative site profiles + multiple urls

Intute also helps identify sources of full text law reports, cases and decisions. Again the emphasis is on tracing sites that are freely available on the Web as well as referring to commercial online law report services. Where a key title or primary resource is available from more than one location (as is the case with Privy Council decisions) Intute gives a comparative record, describing alternative sources and quoting multiple urls with links to each of the variant services.



6. Finding law about a country

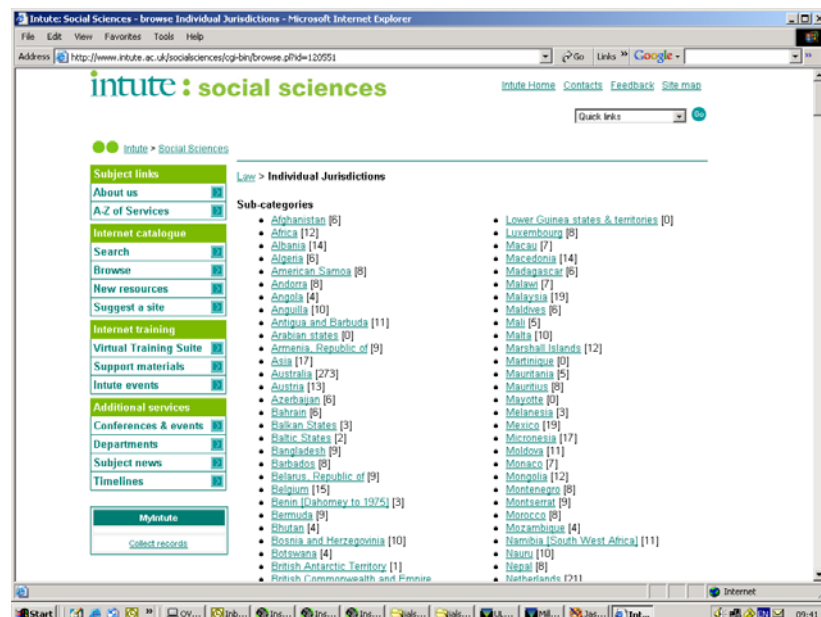
If you need to research law for a particular country or jurisdiction, Intute provides a useful starting point. As governments around the world recognise the importance of the Internet, the Web has become an important source of materials for a growing number of both established and developing countries world wide. Intute collects relevant links for a particular country or jurisdiction together. See Intute browse sections for Canada as an example.



The use of Resource Type Categories on Intute

To aid browsing on Intute, resources within a country (or subject) section are further categorised by type. Resource types include: bibliographies, companies, governmental bodies, journals, organisations and societies, research projects and resource guides. Special law categories are used to help locate the main forms of primary legal literature: legislation, law reports, digests and treaties. Results of a search can be filtered by the Resource types. See the section for British Columbia as an example.

Range of jurisdictions covered by Intute



The Individual Jurisdictions browsing section lists over 230 countries and regions world wide.

Browsing hierarchy in Intute

You can find out more about a country by using browse sections and subsections to gain an overview of just what is available to you, often freely on the Web, relevant to a particular jurisdiction. A browsing hierarchy shown below the title at the top of the screen helps you navigate back and forth from parent section to subsections and display the relevant resource titles carried in each section.

[Law](#) > [Individual Jurisdictions](#) > [Canada](#)

Variant language sources – multiple urls on Intute

Most jurisdictions publish their legislation and law reports in their own official national language. Some selected English language translations can also be available. Intute records list and link to multiple language versions of a site. The description tells you about different languages used on the site.

URL http://www.chrt-tcdp.gc.ca/index_e.asp [English]
URL http://www.chrt-tcdp.gc.ca/index_f.asp [French]

Exercise 1

- Q1a Find a site providing an introduction to UK patent law.
- Q1b From where can you obtain online Jersey legislation ?
- Q1c How many free sites provide judgments from the Scottish Court of Session ?

7. Government Departments

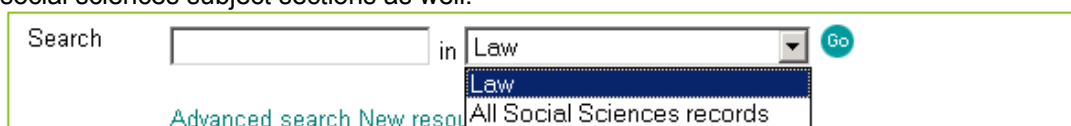
Many governments are making Parliamentary materials freely available on the Internet. Increasingly departments and ministries in governments around the world have a Web presence, explaining their work and publishing official reports, consultation papers and guidance documents. See the relevant Intute Resource Types: Governmental Bodies and Government Publications.

US GPO access service (US Government Printer) <http://www.gpoaccess.gov/index.html>



Searching on Intute + Intute subject sections

Intute enables you to search as well as browse for Internet sites included in the catalogue. A search box is featured at the top of each browsing screen. When you search on Intute you can restrict your query to the law section or extend it to retrieve records catalogued in other social sciences subject sections as well.

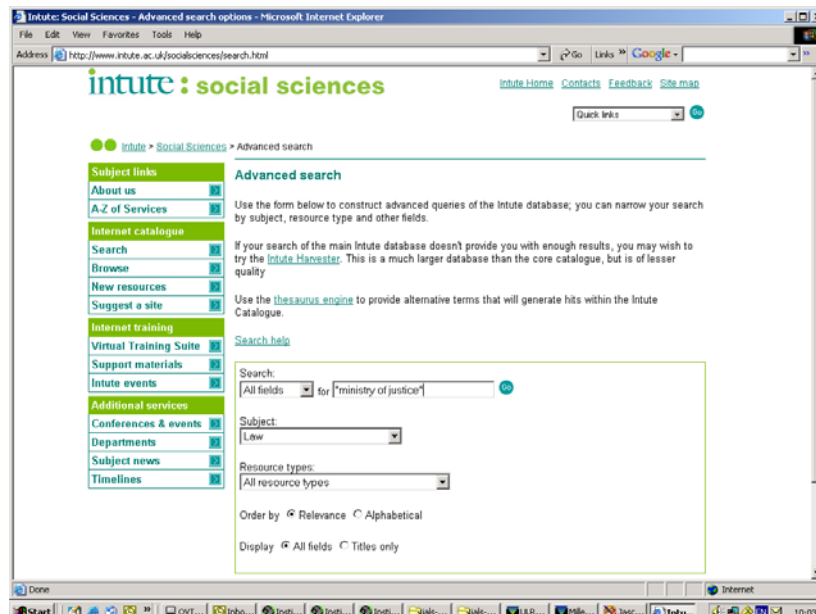


If you are interested in official Government publications it is useful to search the wider Intute: Social Sciences service, to include records created in the Politics section for example.



Advanced Search Form on Intute

Intute also offers an Advanced Search Form for more powerful and accurate searching. Again the Advanced option is displayed on each browse screen.



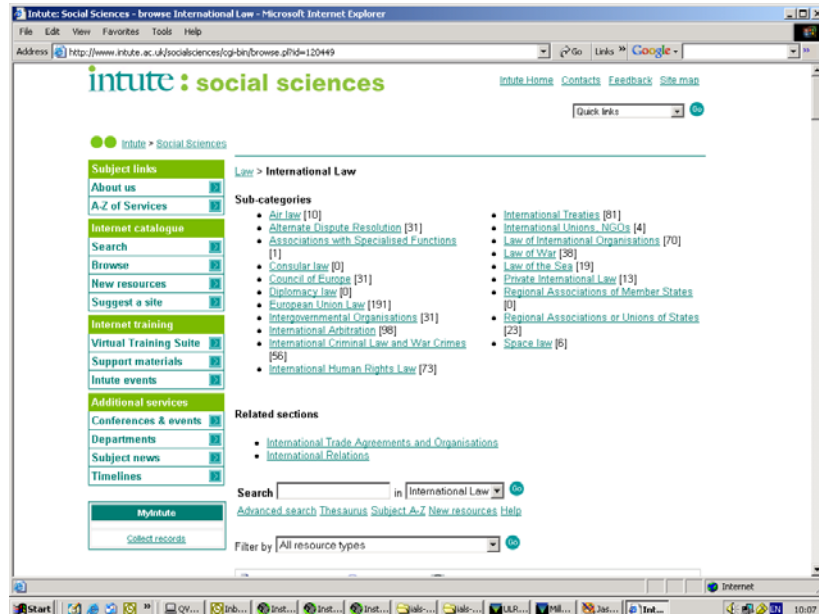
Exercise 2

- Q2a Try a simple search for "ministry of justice". Then try searching for "ministry of justice OR department of justice". Compare the results. Then try the same searches without quotes.
- Q2b Compare simple searches for "air and space" in the "Law" section of Intute and then in "all social sciences" on Intute.
- Q2c Try the Advanced Search to list Law Commissions, Law Reform Commissions and Law Revision Commissions together. Compare word and phrase searching. Use of the Boolean OR connector. Limiting to title field search.

8. International dimension

8.1 International law browse section

Globalisation has increased the need for ready and reliable access to international and multi-national materials, sources for many jurisdictions and topical areas that can support comparative academic and professional work. An international law section on the Intute: Law identifies resources relating to or produced by international, inter-governmental and non-governmental organisations.



Public International Law is the body of law governing the relations between states, international organisations and, sometimes, individuals. Private International Law is law governing interactions among peoples of different citizenship or private relationships across national borders. The Intute International law section contains general international law resources and sub sections for specific topics such as International Human Rights and Law of War and Private International Law.

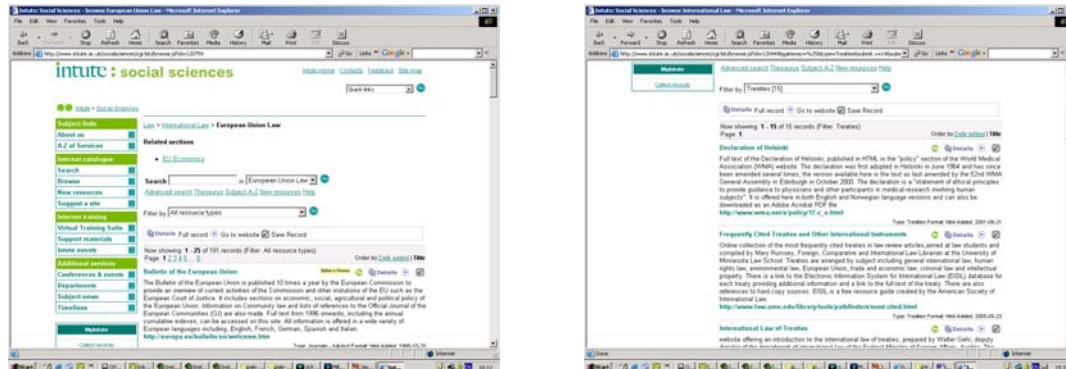


Browse the sections to find:
 HUDOC Human Rights Documentation
 University of Minnesota Human Rights Library

<http://hudoc.echr.coe.int/hudoc/>
<http://www1.umn.edu/humanrts/>

8.2 European Union browse section

The EU law section on Intute contains Internet Catalogue records for quality sites covering European Communities law, providing ready access to treaty texts, regulations, directives, case law and comment as well as bibliographic databases such as EDC sites and EC libraries.

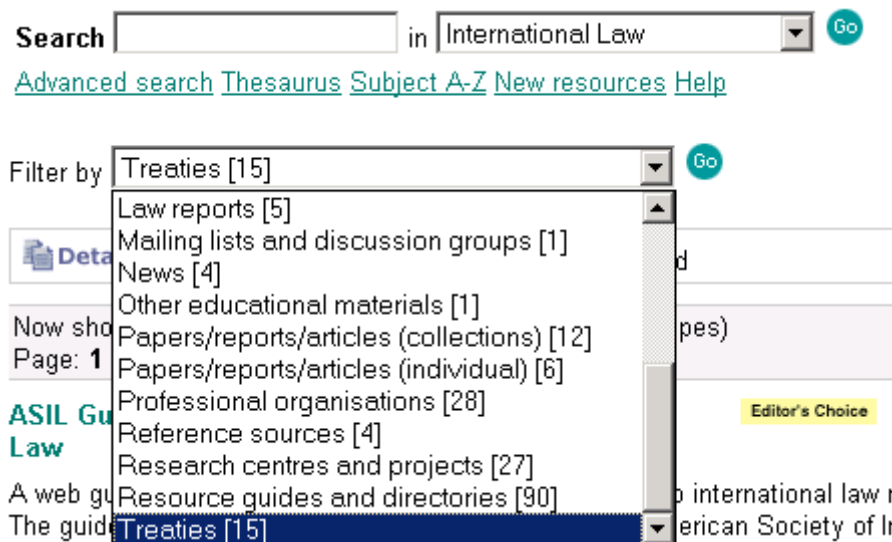


8.3 Resource Type: Treaties

Bilateral and multilateral treaties and conventions constituting primary instruments of international law are included in Intute under the Treaties resource type.

Using the Resource Type Filter and context-sensitive search on Intute

Look at the Treaty sites featured in the International Law section and European Union Law section on Intute. If you are interested in a particular type of material such as Treaties you can select that type from the search filter in the middle of the screen and browse the relevant records. The drop down list shows the number of records of that type in the section. The Resource Type filter is context-sensitive, offering you only those types that are featured in that particular browse section.



- Council of Europe Treaties <http://conventions.coe.int/>
- Fletcher Multilaterals Project <http://fletcher.tufts.edu/multilaterals.html>
- Foreign and Commonwealth Office of the UK Directory of Treaties <http://www.fc.gov.uk/>
- World Intellectual Property Organization WIPO <http://www.wipo.org/>

Display options on Intute

If you **browse** the sites featured in the International Law section or European Union Law section, records are displayed by default in order of **date added** to the catalogue. If you prefer, you can modify the display to list sites by **title**. When you **search** Intute, the results list displays records in order of **relevance** to your search terms. If you prefer, you can modify the display to list sites **alphabetically** by title irrespective of relevance ranking.

Exercise 3

- Q3a Where is the Multilaterals Project based ? Check the site and look for the text of the Treaty of Westphalia.
- Q3b Where on the Internet can you gain free access to judgments from the European Court of Justice ?
- Q3c Is Jersey a signatory to the European Convention on Human Rights ?

9. Secondary Sources

The Intute Internet Resource Catalogue includes many records for secondary legal sources – arranged by jurisdiction and/or subject area.

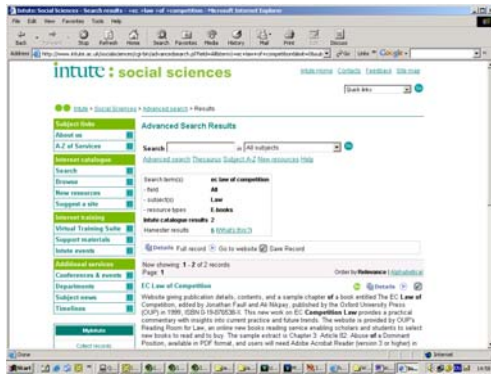
9.1 Journals + newsletters

Try browsing in the Individual Jurisdictions section for the United States. Use the resource type filter to look at: Journals (full text) and Journals (contents and abstracts). Intute distinguishes between Web journal sites that offer full text articles online and journal pages limited to contents tables and/or abstracts of published articles.



9.2 Books

Intute also catalogues Books or Book equivalents available on the Web – offering descriptions and links to online treatises and sample chapters of textbooks dealing with particular legal topics.



9.3 Articles, Papers and Reports

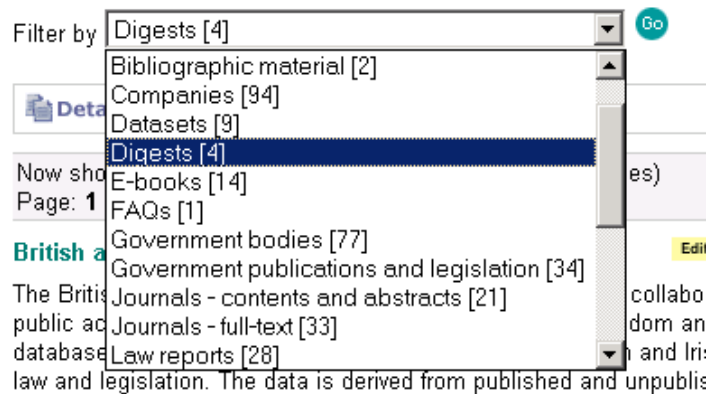
Intute has a resource type category covering sites that publish shorter essays, articles and commentaries in online collections of papers.

10. Finding Tools

A number of sites on the Internet act as finding tools, helping you discover and use other legal materials on the Web. These sites may be digests or indexes referring to legislation or court decisions, they can also be bibliographies or online resource guides and portal services.

10.1 Digests

Look at the Digests featured in the United Kingdom section on Intute. If you are interested in a particular type of source such as Digests you can filter your search results using the filter option in the middle of the screen. The Resource Type filter is context-sensitive, offering you only those types that are featured in that particular browse section. An indication of the number of records of that type within the section is also displayed.



10.2 Resource Guides

Resource Guides are one type of finding tool described on and linked from Intute. Resource Guides can be good starting points for exploring a topic on the Web. They can take the form of a simple or annotated list of Web links, they may be an organised directory or database of links. They can be subject specific, relate to a particular country or international organisation or take a broad approach with relevance to a full range of legal issues.

Try looking at some of the Resource Guides listed in the Intute International Law section. Check the descriptive record and linked sites.

Electronic Information System for International Law (EISIL) <http://www.eisil.org/>
 Legal Research Encyclopedia <http://www.lawschool.cornell.edu/library/encyclopedia/>



See other Resource Guides for other countries and subjects on Intute

10.3 Library Catalogues

Most library catalogues are available for remote consultation via the Internet. Consulting an OPAC enables you to check bibliographic details of print works relevant to your studies and trace the location of print sources in UK and overseas Libraries.

- HERO http://www.hero.ac.uk/reference_resources/online_catalogues_alphabetic3793.cfm
- COPAC <http://copac.ac.uk/copac/>
- LibDex <http://www.libdex.com/>

A number of specialist collection catalogues or web databases have been created through mapping projects funded by the UK's Research Support Libraries Programme.

- RSLP <http://www.rslp.ac.uk> (eg Foreign Law Guide <http://ials.sas.ac.uk/flag.htm>)



10.4 Digital Libraries and Collections

A number of major digital collections are being developed, particularly in the USA, as subscription-based information sources. These services provide online access to digitised or scanned image versions of original paper sources (often as PDF files).

- HeinOnline <http://www.heinonline.org/front/front-index> (Journals + US official documents)



LLMC Digital http://www.llmc.com/digital_toc.htm (US + Commonwealth materials)



Check with your library (via the library catalogue or website) to see if they subscribe to these resources.

10.5 Abbreviation and citation guides

Cardiff Index to Legal Abbreviations <http://www.legalabbrevs.cardiff.ac.uk/>
 University of Kent, Templeman Library / Kent Law School Legal Abbreviations
<http://library.kent.ac.uk/library/info/subjectg/law/abbrev.htm>

Abbreviations are also used in the Intute alternative title field and the resource description so you can try a search for an abbreviation of Intute.

11. Professional organisations and societies

Web sites for independent organisations, professional associations and learned societies provide another valuable source of legal information. Organisations may include professional bodies like Bar Councils or Law Societies.

For example, the American Society of International Law (ASIL) Web site <http://www.asil.org/> is a content-rich site, featuring resource and research pathfinders in international law and related legal subject areas.

12. Research Centres and Research Projects

Web sites explaining the work of Academic departments, Research Centres or Projects, and in some cases publishing the products of their research are also evaluated and included in Intute. Site profiles on Intute are designed to uncover and increase access to such material. For example see the entry for FLARE the Foreign Legal Research project and link to the web pages on the IALS Web site <http://ials.sas.ac.uk/flare/flare.htm>

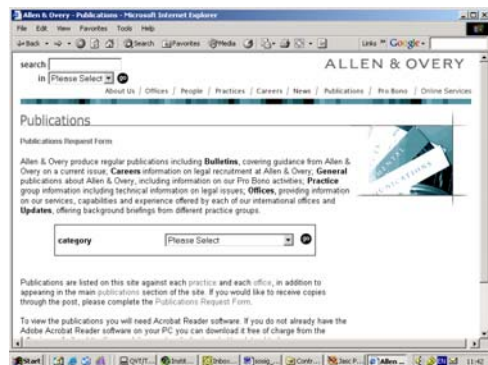


Exercise 4

- Q4a Try a phrase search (using quotes) to locate the Web site for the Council of the Bars and Law Societies of the European Union. Name two CCBE publications.
- Q4b What is GLIN and where can you find a guide to online resources for Antarctica ?
- Q4c Try an advanced search for "Foreign law" by Resource Type "Research Centres + Projects". Find a site that will tell you about a project mapping foreign primary legal materials held in UK libraries and then find a UK library that holds treaties for Switzerland.

13. Companies

Under the Companies heading, Intute includes records describing and linking to commercial service sites, Legal publishers' sites, and Law Firm sites amongst others. Intute tells you about sample services, gives notes on subscription and registration requirements. Intute site profiles and search facilities (searching every word in the profile) also help reveal less obvious material from less likely places.

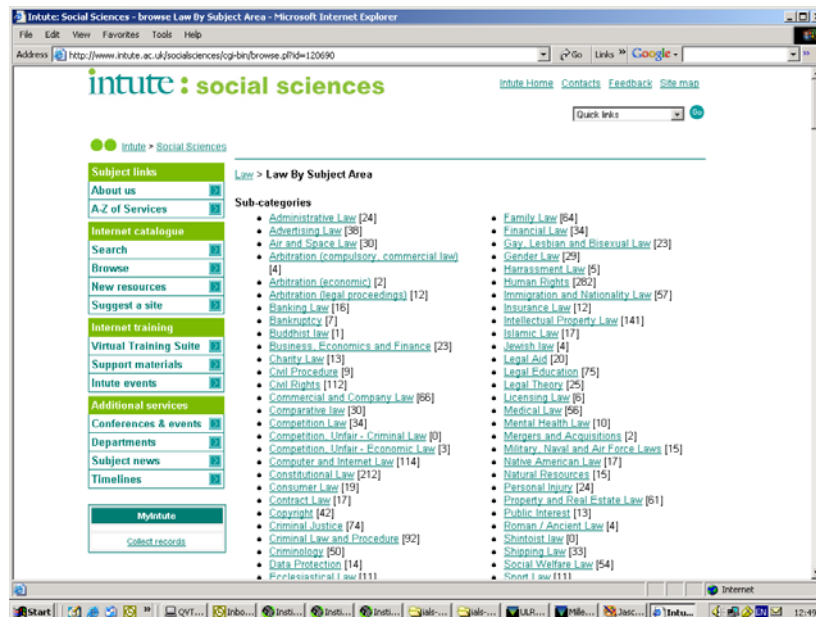


A look at keywords and the Intute Legal Thesaurus

Each site and record added to the database is assigned appropriate keywords from a specialist legal thesaurus. You are able to search on keywords or search and browse the thesaurus itself to find broader or narrower terms and then link directly to records in the Resource Catalogue using those terms.

14. Legal Subject Materials

Intute Law by Subject Area Browse



Intute supports topical legal research with a set of browse sections dedicated to particular legal subject areas. Subject headings are assigned to each record added to the catalogue.

Intute sets law in an increasingly important inter-disciplinary and socio-legal context.

For example: In response to user requests law section editors have developed the gateway's coverage of "Megan's Law", concerning public access to sex offender registration records in the United States. The topic links family law and child protection concerns with criminal justice, privacy and civil rights issues. Intute also enables you to look beyond the law section into related political, social and welfare issues.

Intute: Social Sciences is a partner and major contributor to the full Intute service, providing content for a national multidisciplinary Internet Resource Catalogue. Connect to <http://www.intute.ac.uk/>

Intute is a free online service providing you with access to the very best Web resources for education and research. The service is created by a network of UK universities and partners. Subject specialists select and evaluate the websites in our database and write high quality descriptions of the resources. The database contains more than 114,000 records.

Exercise 5

- Q5a On which law firm web sites can you find the text of the Hague Convention on the Civil Aspects of International Child Abduction ?
- Q5b Try an advanced keyword field search for "publishers" of "international law"
- Q5c Try a search for "minority rights" in the Intute law section and Intute: Social Sciences and on the whole of Intute.

Part Two: Additional Intute Services and Functionality

15. Search techniques

15.1 Search strategies

Before searching on Intute or other services it is helpful to develop a search strategy to ensure you are looking for information appropriate to your task.

- Think about your topic – what particular aspects of the topic concern you? Are you considering from a particular perspective? Are you interested in a particular type of material? A single document or field of study?
- Define your topic in a single sentence.
- Identify key words and split your sentence into two or three concepts.
- Make a list of alternative terms or synonyms or alternative spellings that could be used to describe your concept.

15.2 Search engines and local site search facilities

Using search engines wisely.

- Check how many results and relevance of results, is the summary information sufficient to help judge the relevance and quality ?
- Check Help text to see if the search engine supports: name or phrase searching; Boolean operators (AND, OR and NOT) to combine or exclude terms; offers truncation to search form terms with the same root; allows field searching to limit your query; or has options to search PDF documents carried by Internet sites.
- Don't give up if what you need is not found. Consider a different approach.

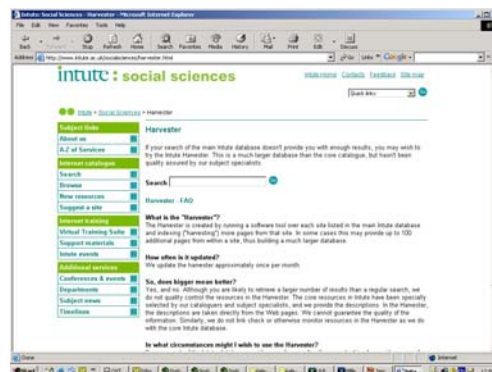
See Search Engine Watch <http://www.searchenginewatch.com>. Bear in mind some search engine limitations – no quality evaluation therefore a lot of “noise” in the search results, results mix and fail to rank authoritative + advertising sites, site location and country coverage are not always considered, results can be weighted by “pay-for-placement”, some engines only scan monthly, longer pages not indexed, information in deep web and web databases is missed, some pages cached by the search engine may be out of date.

15.3 Intute Harvester Search Engine

Using the Intute Harvester Search Engine

Connect <http://www.intute.ac.uk/socialsciences/harvester.html>

The Harvester Search Engine is an additional Intute facility enabling you to widen your research even further, beyond the Internet resource catalogue. The Harvester Search Engine is a complementary database of over 300,000 links gathered and indexed from each of the quality websites featured in the Intute catalogue.



16. Marking and saving materials

16.1 Marking Intute records for saving – personal Internet resource bibliography

You can mark records for saving in a search session by using the tick button at the right of each record. The number of records you have marked for saving is indicated in the MyIntute box on the left of the screen.

You can review records you have marked by clicking on the “collect records” link and then delete any records you don’t require from this list.

You may then export the saved records to your own Web pages. Click on “Save as HTML” and copy and paste the code provided into your Web page. Or you may save the records as plain text for re-use elsewhere.

Intute offers further options for saving records. Registering with MyIntute creates a personal account where you can save and collect both Intute records and database searches and export records in a variety of other formats.



16.2 Downloads from Web sites

Many Web sites contain full text documents that you can read, print or download from the site. Intute site descriptions note any special file types, download options or plug-in software necessary to view the site and its contents, or any registration or subscription requirements.



PDF Portable Document Format. Get latest Acrobat Reader plugin to read, save or print PDF files <http://www.adobe.com/products/acrobat/readstep2.html>. Note file sizes before downloading or opening the documents and optimise your printer settings for PDFs.

RTF Rich Text Format. Notepad, Wordpad or Word processor can handle.

Word or WordPerfect

Recent versions of Microsoft's Word or Corel's WordPerfect programs can normally be set to read and convert documents in a range of other formats, including each other's format. (**Tip.** It may help to download or save the file to a temp directory on your computer and then use your word processing application to open it.)



Exercise 6

- Q6a Compare a search for "fishing rights" on Intute with a search on the Social Science Search Engine.
- Q6b In which formats are articles carried by the Women's Legal History Bibliography project?
- Q6c How do Word and PDF versions of the same document compare (in size, download speed and ability to edit)? - try the Translated Norwegian legislation site from the University of Oslo).

17. Authority issue – Quality – How do you know a site is OK ?

17.1 Who ?, When ?, Where ?

The fact that the Web enables almost anyone to publish almost anything, bypassing traditional filtering procedures and editorial scrutiny, raises some quality and trust issues. Critical thinking about Web-based information (particularly free Web sources) will help you get the best from the Internet and avoid reference to poor quality information, misinformation and unreliable or out-of-date sites. Such thinking is demonstrated by Intute itself and adopted by services like EISIL.

Intute relies on people rather than robots to assess sites within their area of subject specialisation, the site profile confirms the authority of the site, tells you who is taking responsibility, who is providing the information and why. Section editors create and maintain independent metadata and intelligence about each resource indexed.

Intute concentrates on sites that are scholarly or particularly likely to satisfy users' information needs. We check trustworthiness, currency and user-friendliness. We're looking for resources with substantive content relevant to learning, teaching and research. We exclude sites that are low on content but high on personal opinion or political bias or those limited to promotional material.

Intute evaluation tips

- Check the author + site host and their status. Interpret the url. Is this a government or academic site etc?
- Check for real content, information in the Web pages themselves and offered in online documents.
- Check on the 'last updated' date.
- Check for broken links.

- View the HTML code (HyperText Markup Language) or page source with your Web browser to check creation dates and metadata content indicator tags.

Additional tutorial services hosted by Intute will help you.

17.2 Internet Detective

Connect to: <http://www.vts.intute.ac.uk/detective/>

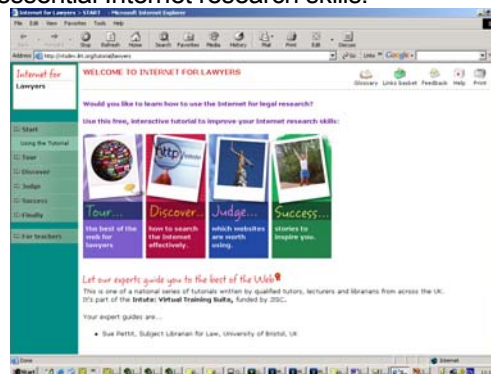
Internet Detective is a free web-based tutorial helping you develop Internet awareness and appraisal skills. The self-paced tutorial offers guidance on how to evaluate the quality of Internet-based information, helping you decide on the authority and usefulness of the service to your work. Internet Detective offers background information on how the World Wide Web works with notes on understanding urls and what they tell you about the identity of the source organisation and country.



17.3 Internet for Lawyers, Thinking critically !

Connect to: <http://www.vts.intute.ac.uk/he/tutorial/lawyers/>

Internet for Lawyers is an online self-paced, interactive legal research tutorial written by Sue Pettit, Law Librarian at the Wills Memorial Library University of Bristol. The tutorial focuses on legal materials on the web offering a series of quizzes, exercises and link saving features designed to help develop essential Internet research skills.



18. Citing Internet Information

Intute can help you assemble relevant Web-based source materials for papers, reports or ongoing study. It is important to cite Internet information appropriately. Note down url and page titles for sites you need to reference in your work. If you find it useful to build up your own set of urls using bookmarks or favorites, remember that you can search for a url on Intute to check your reference and use the Intute mark and save features to create your own bibliography of useful Internet resources.

Vendor and Media Neutral citation which applies whether the item is published in print or electronic format is being adopted more widely by legal information providers on the Web.

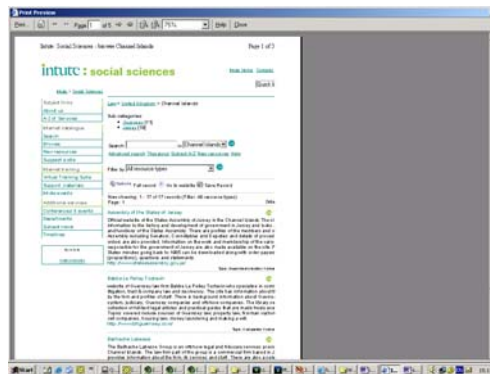
See BAILII help pages for examples and guidance on finding the full reference from neutral citations <http://www.bailii.org/bailii/citation.html>

MLA Style – Modern Language Association of America. See the FAQs for citing information from the Web in the MLA Style section <http://www.mla.org/>

Also check with your tutor to see if your department or university require specific formats for citing networked sources.

19. Printing

Check online help for your browser to see available printing options. Internet Explorer and Netscape are the leading browsers. Remember that Print Preview enables you to check how many pages a Web site includes and helps you identify particular page numbers to print.



If the site uses frames, click into the frame you wish to print. Again use Print Preview to check.

20. Keeping up-to-date

News and Current Awareness are important aspects of legal research. Intute: Law aims to include sources of timely and historic significance; identifies legal news sites and services, and contributes to the wider Intute service's news features.

News sites

The Lawyer

<http://www.interactive-lawyer.com/>

New on the Legal Internet

<http://www.venables.co.uk/newactual.htm>

Delia Venables Portal to Legal Information

<http://www.venables.co.uk/>

UK national newspapers + agencies

<http://www.thebigproject.co.uk/news/>

Intute: Behind the Headlines provides background references and information sources to topical news stories across the disciplines. <http://www.intute.ac.uk/behindtheheadlines.html>

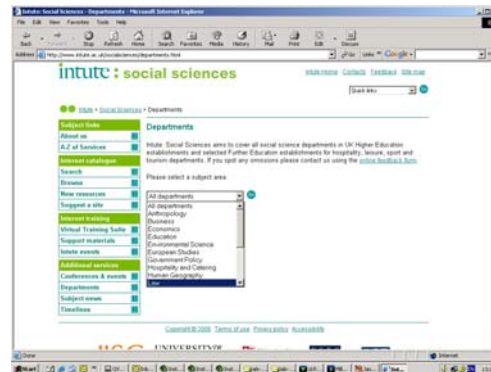


A new Intute feature called “Timelines” is being developed for the Law section to help set key events in UK and international law in a historical context.

http://www.intute.ac.uk/socialsciences/timeline_Law.html

Keeping Intute up-to-date

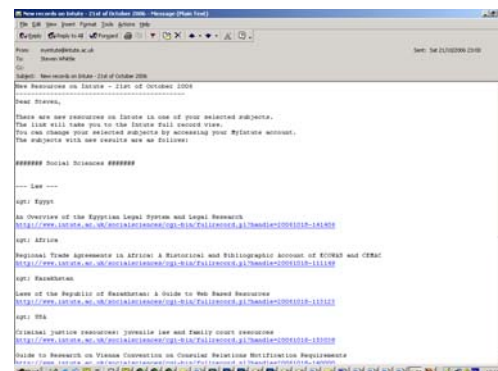
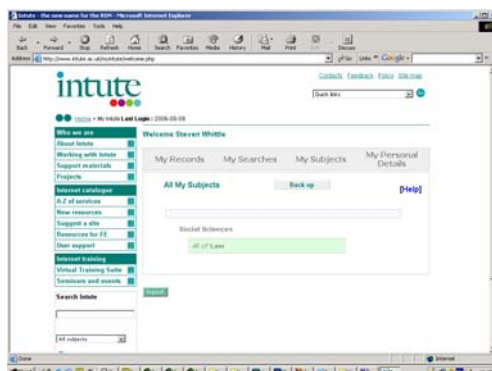
The Intute database employs automatic housekeeping tools to ensure reliable performance and ongoing update. It enables us to identify duplicate records, track and repair broken links, prompt for record review and generate search statistics. About 5% of the database is involved in review and repair each week.



Intute also has some support components called Conferences and Events, Departments and MyIntute to help keep you up-to-date and in touch with events within the legal community.

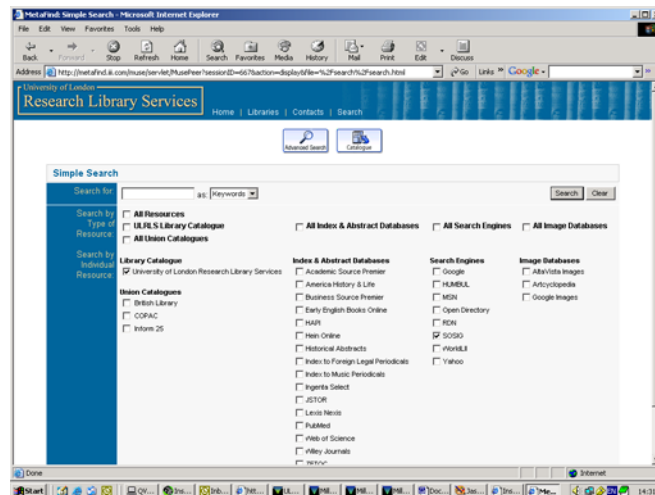
The Intute: Law Conference and Events and Departments features are optional free facilities providing a focus for information about events and career development opportunities, listing conferences, courses and departments in UK higher education institutions.

MyIntute is another optional free facility enabling you to create a personal profile, save search strategies and set email alerting preferences to keep track of new additions to the Intute Resource Catalogue which are relevant to your subject interests . A weekly report will be sent to your mailbox.



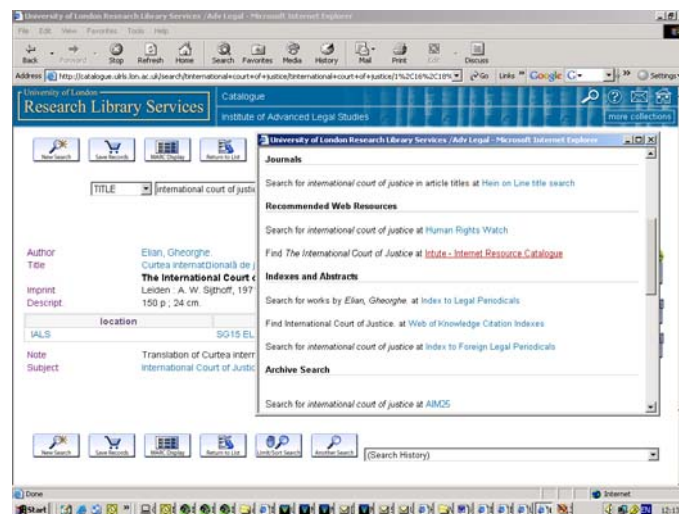
21. Library system portals: cross searching resources

Library catalogue system suppliers are developing search interfaces that allow access to multiple resources with one search. It makes it possible for a single search to be sent to several selected web-based resources with results presented in a single interface. These products, such as Innovative Interfaces Inc.'s Metafind, facilitate integrated access to the Intute's Internet Resource Catalogues. This will allow a single search to trace onsite print materials, electronic subscription resources and free Internet-based resources.



22. Library system portals: smart linking

System suppliers are also developing products to provide context-sensitive links from the library catalogue to other relevant web-based resources, including the Intute's Internet Resource Catalogues. Products, such as Innovative Interfaces Inc.'s WebBridge, enable a catalogue search to be taken forward to a range of other relevant resources. Again this new facility will allow you to trace library-held print materials or electronic resource subscription services and go on to find other relevant free remote Internet resources— raising awareness of the full range of available materials.



You can try these features on the IALS Library catalogue at <http://ials.sas.ac.uk/catalogue.htm>

23. Contacting Intute

We hope that you have found this Workbook useful and that it encourages you to try Intute: Law and related facilities. When you have used the service please contact us with comments and suggestions. We'd like to hear from you.

How would you like to see the service develop?
More legal subject specialisation?



More inter-disciplinary coverage?
More international law?

You can recommend a site for inclusion at any time:
http://www.Intute.ac.uk/new_resource.html

or contact the Intute: Law Section Editors:

Heather Memess, IALS Library, University of London
Sue Pettit, Wills Memorial Library, University of Bristol
Catherine Dack, Wills Memorial Library
Steven Whittle, IALS Library, University of London

heather.memess@sas.ac.uk
sue.pettit@bristol.ac.uk
cath.dack@bristol.ac.uk
steven.whittle@sas.ac.uk

24. Answers

Exercise 1

- Q1a Find a site providing an introduction to UK patent law.
 A1a The Jenkins + Co. Web site <http://www.jenkins-ip.com/patlaw/intro.htm>
- Q1b From where can you obtain online Jersey legislation ?
 A1b Browse site profiles in the Jersey section. For laws in force see the Jersey Legal Information Board <http://www.jerseylegalinfo.je> Selected financial services laws feature on the Jersey Financial Services Commission Web site <http://www.jerseyfsc.org/>
- Q1c How many free sites provide judgments from the Scottish Court of Session ?
 A1c Scottish Court Service <http://www.scotcourts.gov.uk/opinionsApp/index.asp?txt=False> BAILII (+ CommonLII) <http://www.bailii.org/scot/cases/ScotCS/> WordLII <http://www.worldlii.org/scot/cases/ScotCS/>

Exercise 2

- Q2a *Try searching for "ministry of justice". Then try searching for "ministry of justice OR department of justice". Compare the results. Then try the same searches without quotes.*
 A2a Quotes are used by Intute to enable phrase searching. The use of the Boolean connector "OR" enables you to extend your search to trace related variants. Without quotes, Intute automatically looks for each word in your search string linked with the Boolean connector "AND".
- Q2b *Compare simple searches for "air and space" in the "Law" section of Intute and then in "all social sciences" on Intute.*
 A2b Intute automatically searches the whole social sciences catalogue unless you limit your search to law. Searching the whole catalogue returns more hits, including more socio-legal sites.
- Q2c *Try the Advanced Search to list Law Commissions, Law Reform Commissions and Law Revision Commissions together. Compare word and phrase searching. Use of the Boolean OR connector. Limiting to title field search.*
 A2c See how the Advanced Search form can give you more control over what you are searching for and where you are searching.

Exercise 3

- Q3a Where is the Multilaterals Project based ? Check the site and look for the text of the 1648 Treaty of Westphalia.
 A3a The project is based at the Fletcher School of Law & Diplomacy, Tufts University, USA. <http://fletcher.tufts.edu/multilaterals.html>
- Q3b *Where on the Internet can you gain free access to judgments from the European Court of Justice?*
 A3b See Intute EU section Documents: Law Reports entry for the Europa service: Recent Case Law of the Court of Justice and the Court of First Instance.
<http://www.curia.eu.int/en/transitpage.htm>
<http://europa.eu.int/cj/en/index.htm>
- Q3c *Is Jersey a signatory to the European Convention on Human Rights ?*
 A3c Jersey is party to the Convention through UK. See Jersey Human Rights Web site on implementation into domestic Jersey Law <http://www.humanrights.gov.je/>

Exercise 4

- Q4a *Try a phrase search (using quotes) to locate the Web site for the Council of the Bars and Law Societies of the European Union. Name two CCBE publications.*
- A4a <http://www.ccbe.org/> "Code of conduct for lawyers in the EU" and "Position Papers"
- Q4b *What is GLIN and where can you find a guide to online resources for Antarctica ?*
- A4b GLIN is the Global Legal Information Network web reference resource developed by the US Library of Congress <http://www.loc.gov/law/guide/nations.html>
- Q4c *Try an advanced search for "Foreign law" by Resource Type "Research Centres + Projects". Find a site that will tell you about a project mapping foreign primary legal materials held in UK libraries and then find a UK library that holds treaties for Switzerland.*
- A4c Your search should lead you to the Intute record for the FLAG (Foreign Law Guide) Project. Link to the site and use the FLAG web database to locate UK libraries with holdings of treaties for Switzerland. Treaty texts are held by the Squire Law Library at the University of Cambridge.

Exercise 5

- Q5a On which law firm web sites can you find the text of the Hague Convention on the Civil Aspects of International Child Abduction ?
- A5a Search on Intute Law by the name of the convention to find the website of Crouch and Crouch, Virginia Lawyers in the USA <http://adams.patriot.net/~crouch/fln/fln.html>
- Q5b Try an advanced keyword field search for "publishers" of "international law"
- A5b Your search should pinpoint entries for publishers such as Kluwer Law International and Oceana Publications Inc.
- Q5c Try a search for "minority rights" in the Intute law section and Intute: Social Sciences and on the whole of Intute.
- A5c You should see law related sites and more social welfare sites searching Intute: Social Sciences as a whole. Searching the whole of Intute you should see results retrieved from a full range of subject catalogues.

Exercise 6

- Q6a *Compare a search for "fishing rights" on Intute with a search on the Social Science Harvester.*
- A6a The Social Science Harvester finds may more sites - derived from quality sites featured in the Intute Internet Resource Catalogue.
- Q6b *In which formats are articles carried by the Women's Legal History Bibliography project?*
- A6b As indicated by the Intute record, many items are presented as Adobe Acrobat PDF files <http://www.stanford.edu/group/WLHP/articles/articles.shtml>
- Q6c *How do Word and PDF versions of the same document compare (in size, download speed and ability to edit - try the Translated Norwegian legislation site from the University of Oslo)?*
- A6c <http://www.ub.uio.no/ujur/ulov/english.html> Generally PDF versions will be small files (in terms of bytes of data) and download more quickly. You can usually edit Word documents but not PDFs.